



# GAT MONTHLY MEMBERSHIP PROGRESS REPORT

Results as of: 6/30/2024

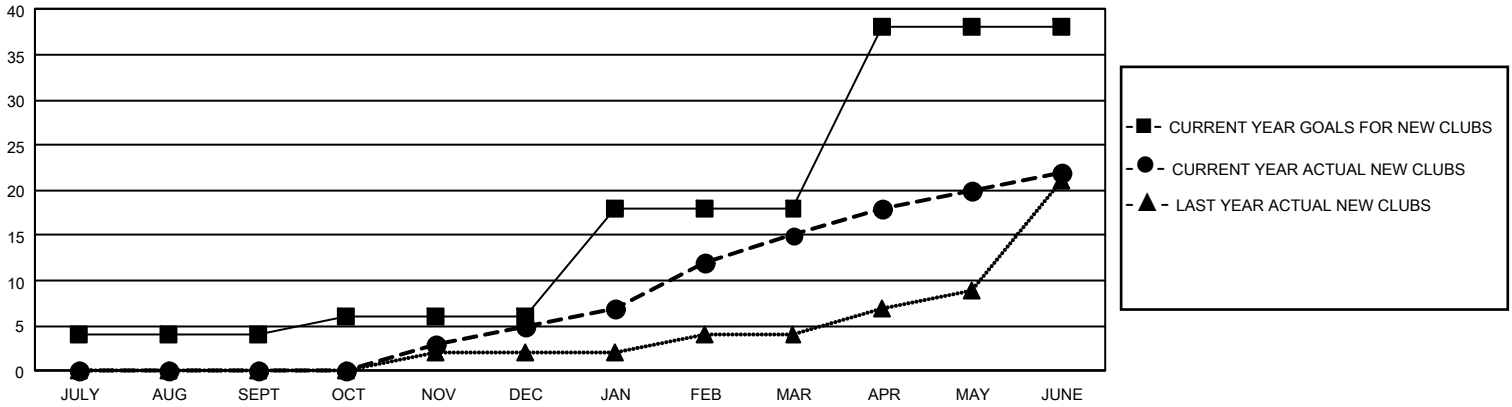
## GMT Constitutional Area 4, Group H

REPORT DOES NOT INCLUDE CLUBS IN UNDISTRICTED AREAS.

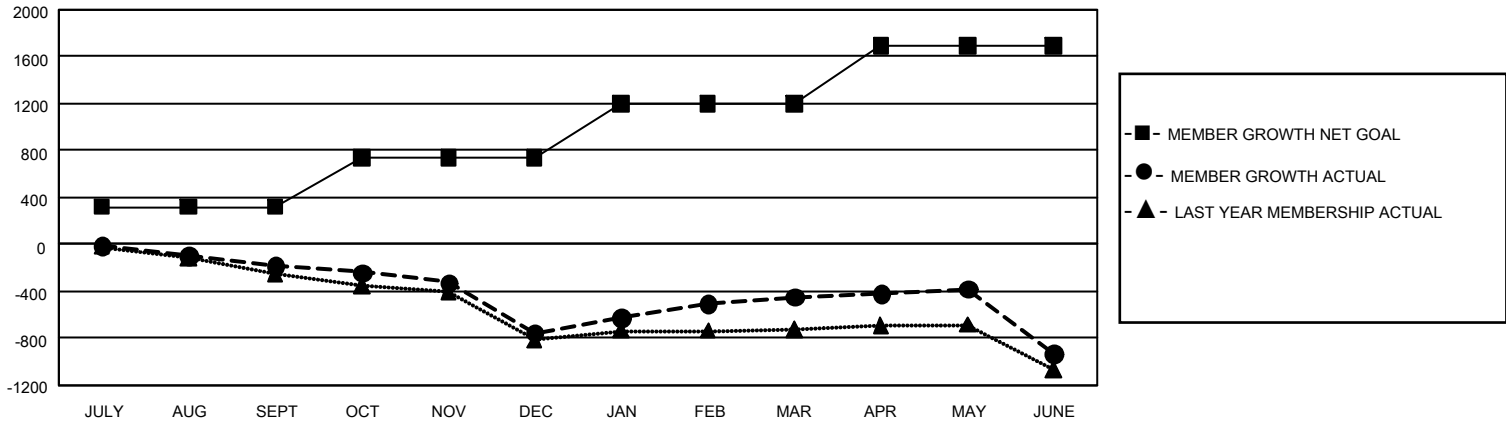
Clubs			
RESULTS FOR 2023-2024			
QUARTER	NEW CLUB GOAL	NEW CLUBS	DROPPED CLUBS
JULY/AUG/SEPT	12	0	11
OCT/NOV/DEC	6	5	7
JAN/FEB/MAR	36	10	6
APR/MAY/JUNE	60	7	6

Members			
RESULTS FOR 2023-2024			
QUARTER	MEMBER GROWTH NET GOAL	MEMBER GROWTH ACTUAL	DROPPED MEMBERS ACTUAL (including transfers)
JULY/AUG/SEPT	319	476	567
OCT/NOV/DEC	421	684	1,134
JAN/FEB/MAR	460	1,022	604
APR/MAY/JUNE	495	1,094	1,441

GOALS AND ACTUAL NEW CLUBS CUMULATIVE



GOALS AND ACTUAL MEMBERS CUMULATIVE



<b>DROPPED CLUBS: 30</b>  <b>DROPPED MEMBERS</b> DECEASED 374 CLUB CANCELLED 200 OTHER 3,166 <b>TOTAL 3,740</b>	947 CLUBS OF 1,483 ADDED 1 OR MORE NEW MEMBERS	<b>GENDER DISTRIBUTION</b> MALE 22,310 (74.09%) FEMALE 7,798 (25.90%) NON BINARY 0 (0.00%) PREFER NOT TO ANSWER 2 (0.01%)
	<a href="#">CLICK HERE FOR CUMULATIVE MEMBERSHIP DATA</a>	TOTAL FAMILY UNIT MEMBERS 1,214 FAMILY MEMBERS PAYING HALF DUES 610